

Innovative Road Asset Management in Cambodia through Axle Load Control in Rural Roads

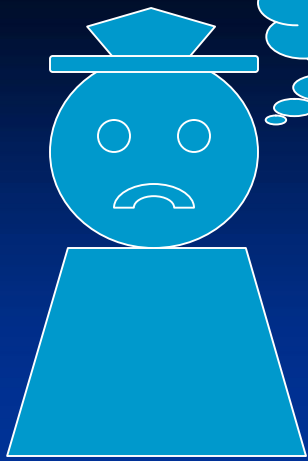
Dr. CHAN Darong

Director General for Technical Affairs

**Ministry of Rural Development
Cambodia**

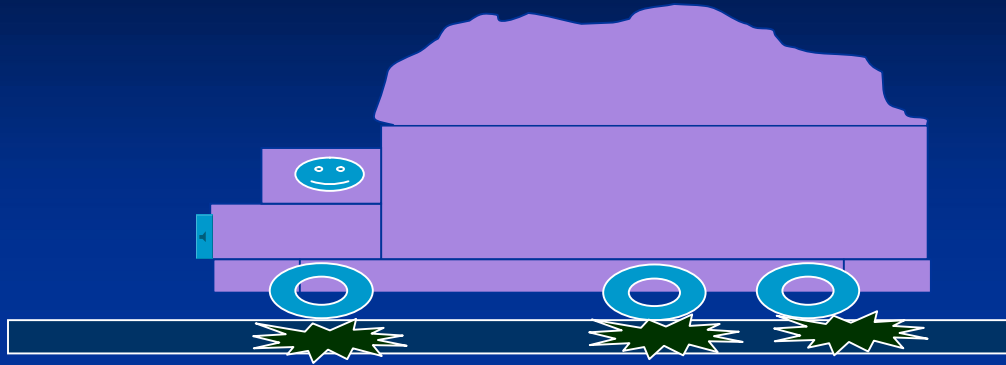
Introduction

- The principal mode for transport in Cambodia is by road
- Road network; 44,300 km
- National and provincial roads 12,000 km
- Rural Roads 32,300 km
- National and provincial roads; MPWT
- Rural roads; MRD



How do we do?

Challenges

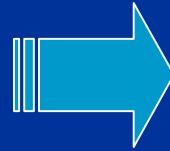


Lack of Maintenance Financing

Growing Traffic

Poor Standard for Maintenance

Lack of Contractor Capacity



Deterioration of Rural Roads



Solutions

Pilot Overloading Control for Rural Roads

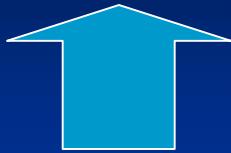
We prepare

Sub Decree: Axle Load Control

Survey: Quarries, Farms, Make database for all vehicles in project area

Good Picture of Heavy Vehicles must in Project Area

How Do We Implement? (Axle Load Control)



-Portable weigh scale
-Motorbike, Computer
-Database Mgt Tools

-Trained Enforcers
1. MRD
2. Police
3. Provincial, District,
Commune

Legislative support to
Sub Decree

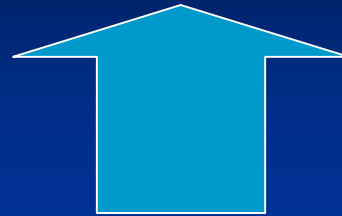
Equipment/Hardware

Personnel

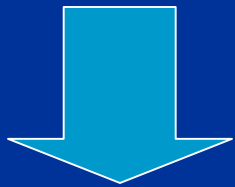
Legal

**Enforcement Revenue is Channeled for Sustainable Operation
and Incentives Etc.**

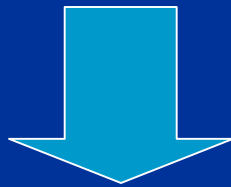
Important Pre Requisite before Operations



Public Information



**Minister's
Public
Speech**



**Media
Coverage**



**Distributing
Leaflets to all
Truck Owners**



**MRD
Web Site**

MRD Roads 98% Unpaved

Maintenance After Rains

\$ Millions Wasted Yearly

Not All Weather

Increasable Everyday

Dust, Mud, Unsafe

Health Affected

We Need to Pave Roads but we also need to save paved roads

We Need to Control Overloading

Why Novel?

No Country in the Region has Done this for Vast Network at Rural Roads

Thank You!